

**Client:** Dr Kommalapatti

**Project:** Downsfield Medical Centre Redevelopment

**Value:** £600,000

**Programme:** 9 Months

**Services:** Project Management, Architectural Design, Principal Designer, Cost advice, Funding application

## Details:

On the recommendation of NHS England, Record Associates were instructed by Downsfield Medical Centre in Birmingham to redevelop their existing cramped and dated accommodation to provide additional space and bring the premises in line with clinical standards. This has yielded a huge increase in the practice's clinical accommodation from 82.73 sq.m to 169.53 sq.m (NIA).

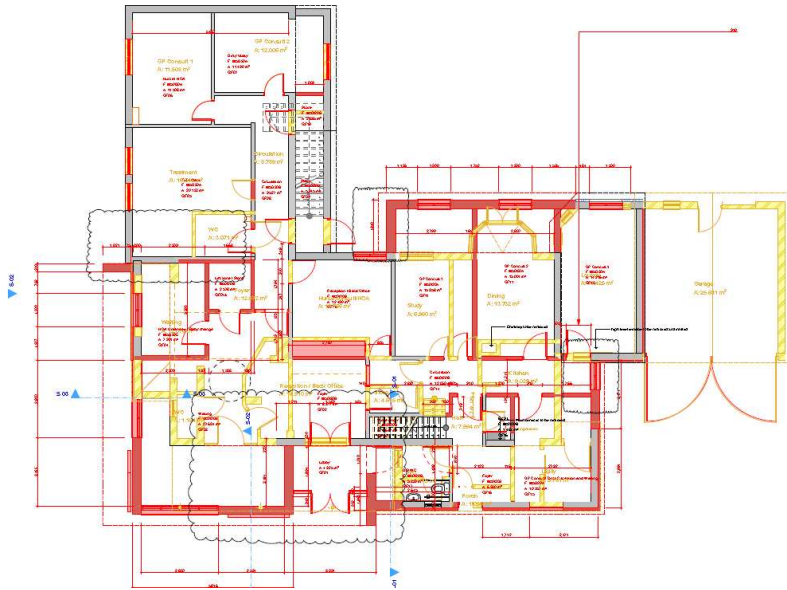
The works were completed in three phases whilst the practice remained in occupation and has involved significant extension and reconfiguration of the former 1950's house and the building services to provide a practice which is now in the best possible fitness to meet the challenges facing primary care.

The project has been part funded (60%) by the NHS via their Estates and Technology Transformation Fund (formerly the Primary Care Infrastructure Fund) with the remaining 40% funded via the practice.

Since the works have been completed the practice has seen a significant jump in new patient registrations so the investment by the practice is already yielding positive returns.









## Downsfield Medical Centre in Numbers:

Gross Floor Area: From 200sq.m to 380sq.m

Programme: 43 weeks

Contract value: £413,570.35

Patients: 1800 before

Prepared by

Record Associates Property and Construction Consultants  
e-Innovation Centre  
Shifnal Road  
Priorslee  
Telford  
TF2 9FT

Phone: 01952 897 330

email: [julian@recordassociates.com](mailto:julian@recordassociates.com)

web: [www.recordassociates.com](http://www.recordassociates.com)

December 2016